

BUILT FOR BATTLE

ESS

TOUGH FOR LIFE



BUILT FOR BATTLE. TOUGH FOR LIFE.™



ESS EYE PRO IS BATTLEFIELD PROVEN.

Military personnel worldwide rely on ESS. Their brave deeds feed our passion for combining performance, style, and safety throughout our line of advanced eyewear. ESS Eye Pro exceeds the most stringent military testing standards and is the only brand of eye protection issued to all branches of the U.S. Department of Defense.

Trust ESS for battle-proven toughness and innovations born from unyielding research in military eye protection. Our strong warranty, unique **Lens Contingency Program™**, and stand-alone replacement parts are all built-in assurances that your eye pro can withstand your demanding lifestyle. ESS helps keep you on target and your eyes protected.

▶ DAMAGED YOUR ESS LENSES? NO PROBLEM.

With the **ESS Lens Contingency Program™**, there's a one-time remedy for the scratched-lens blues: for every pair of lenses that you buy, you can get 50% off the retail price of a new set of lenses. Simply replace your damaged goods with a like-kind lens and put your eye pro back into action. If you're hard on your gear, the Lens Contingency Program™ is like a new lease on sunglass life.

- 1-2 **ESS BALLISTIC TESTING • ANSI & MIL SPEC STANDARDS**
- 3-4 **ESS OPTICAL STANDARDS HIGHLIGHTED • ESS VLT LENS CHART**
- 5-6 **CROWBAR™ SUNGLASSES • ROLLBAR™ SUNGLASSES**
- 7-8 **CDI™ SUNGLASSES • CDI MAX™ SUNGLASS**
- 9-10 **5B™ SUNGLASSES • CREDENCE™ SUNGLASSES**
- 11-12 **CROSSBOW® EYESHIELD • SUPPRESSOR™ EYESHIELD**
- 13-14 **CROSSHAIR™ EYESHIELD • ICE™ & ICE NARO™ EYESHIELDS**
- 15-16 **INFLUX™ GOGGLES**
- 17-18 **PROFILE NVG™ GOGGLES • PROFILE PIVOT™ GOGGLES**
- 19-20 **PROFILE TURBOFAN™ GOGGLES • LAND OPS™ - TACTICAL XT™**
- 21-22 **FLIGHT PRO™ GOGGLES • FLIGHT DECK™ GOGGLES**
- 23-24 **FIREPRO-1971™ GOGGLES • INNERZONE™ GOGGLES**
- 25-26 **FIREPRO-1977™ GOGGLES • STRIKETEAM™ GOGGLES**
- 27-28 **PRESCRIPTION EYEWEAR SOLUTIONS**
- 29-30 **U.S. NSN'S • APEL PRODUCTS**
- 31-32 **INTERNATIONAL NATO NSN'S • TESTIMONIAL - KELLY ROGNE**

IMPACT SPECIFICATIONS

ANSI Z87.1-2010 STANDARDS



HIGH VELOCITY IMPACT

ESS Eye Pro surpasses the test for high-velocity impact protection as defined by The American National Standards Institute (ANSI). Per ANSI Z87.1, a quarter-inch steel shot to 102 miles per hour at a lens straight on from three different heights, and at seven different angles. To pass the high-velocity test, no contact between the lens and eye is permitted during impact. In addition, no frame parts or lens fragments may be ejected during impact.

HIGH MASS IMPACT

ESS Eye Pro also surpasses the protection requirements for high-mass impact. Within ANSI Z87.1, the high-mass impact test requires that the lens be hit by a 500-gram metal spike (over a pound of weight) dropped from a height of 51.2 inches (over four feet). To pass the test, no frame parts or lens fragments may be ejected during impact.

WHAT HAPPENS TO ANSI RATED EYE PRO WHEN IT IS TESTED TO THE MIL-SPEC STANDARD?

NON-ESS ANSI EYE PRO



NON-ESS ANSI EYE PRO

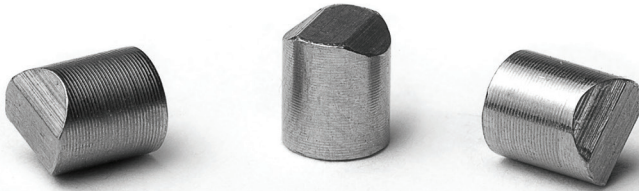


NON-ESS ANSI EYE PRO



U.S. MIL SPEC MIL-PRF-32432 STANDARDS

Chisel Tip Projectiles used in MIL SPEC testing.



SPECTACLES STANDARD

.15 caliber (at 640-660 ft/sec)

GOGGLES STANDARD

.22 caliber (at 550-560 ft/sec)

U.S. MIL SPEC MIL-PRF-32432

ESS Eye Pro surpasses the safety and ballistic testing standards found in MIL-PRF-32432.

The U.S. military standard requires that ballistic eyewear must be able to withstand up to a .15 caliber at 640-660 ft/sec for spectacles and .22 caliber at 550-560 ft/sec for goggles.

The ESS Mission: A Passion Fueled by Duty

At ESS, our unyielding passion is to make the toughest eyewear in the world. Not because it's our job, but because it's our duty – a duty inspired by those we serve: military personnel, first responders, and other everyday heroes. Those who rely on ESS can't settle for less, so we can't either. We provide superior fit, form, and function so our tough customers can stay safe and be brave: on or off duty, beyond risk and on to adventure.

ESS innovation is born from intense listening to elite warriors. We dissect their challenges, then roll up our sleeves to create real-life solutions that work under duress. The end result is battle-proven eye pro with a track record of peak performance in the most hostile environments. The entire line of ESS ballistic-grade eye pro is engineered to meet or exceed the most stringent U.S. Military and ANSI Z87.1-2010 specifications.

THE US MILITARY STANDARD IS OVER 6 TIMES THE KINETIC ENERGY LEVEL OF ANSI Z87.1 TESTING STANDARD. ESS EYE PRO EXCEEDS U.S. MILITARY STANDARDS.

MIL-SPEC TESTING RANGE



ESS CROSSBOW EYESHIELD



ESS CROSSBOW EYESHIELD



ESS OPTICAL CLARITY

ESS SURPASSES ANSI STANDARDS FOR OPTICS

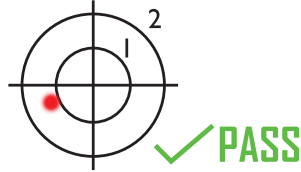
PRISMATIC POWER ANSI Z87.1 OPTICS TEST #7.4.3.2

Prismatic Power is the measurement of how much light bends through a lens. The effect of excessive prism is that objects viewed through a lens aren't actually where they appear to be. The test also measures the prism imbalance in the left and right sides of the lens, which causes the eyes to fatigue as they work to overcome the artificial "double vision" induced by an unbalanced lens.

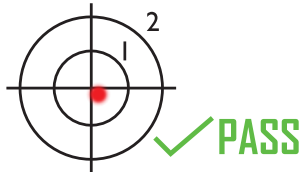
NON-COMPLIANT OPTICS



ANSI Z87.1 STANDARD



ESS STANDARD

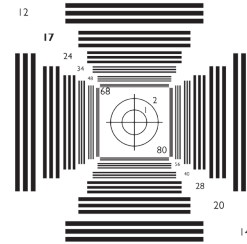


A laser fixture is set up 30 feet from the NBS target and is fired through each lens at the target. The better the optics, the less bending of the laser beam is observed; a lens without induced prism will allow the laser's path to continue directly at the center of the NBS target. Bear in mind when viewing the amount of prism that the effects of the distortion are more significant at distances greater than 30 feet.

REFRACTIVE POWER: ANSI Z87.1 OPTICS TEST #7.4.3.3

Lens refraction is a measure of what many people refer to as distortion or blurriness. The ANSI Z87.1 Refractive Power test requirements allow for a moderate amount of refraction in a safety lens. The lines in the NBS Definition Pattern are used to measure this lens characteristic.

NBS DEFINITION PATTERN



NON-COMPLIANT OPTICS



ESS lenses are held to a higher level of performance than the ANSI Z87.1 minimum refractive power standard, which is why objects look clearer through ESS lenses.

ANSI Z87.1 STANDARD



ESS STANDARD



LENS CHART

(VLT) - VISIBLE LIGHT TRANSMITTANCE

Visible Light Transmittance (VLT) represents the percentage of light that passes through a lens. For example, a lens with a VLT of 23 admits 23% of visible (non-UV) light, filtering out the remaining 77%. The lower the VLT, the darker the lens. Regardless of VLT, all ESS lenses provide 100% UVA/UVB protection.



CLEAR

VLT: 90

For use indoors or at night. Has no influence on contrast or color.



PHOTOCHROMIC

VLT: 86-24

Lens with Light Adapting Technology for all light conditions - Lens goes from dark gray to clear



HI-DEF YELLOW

VLT: 85

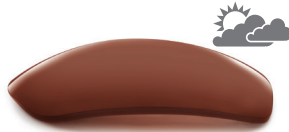
For flat to very low light. A high-contrast lens that helps bring out definition.



HI-DEF BRONZE

VLT: 62

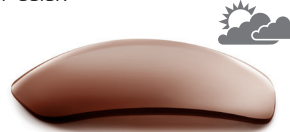
For flat to low light. Filters blue light to boost contrast & enhance depth perception in overcast or shaded conditions.



HI-DEF COPPER

VLT: 32

For flat to medium light. Improves contrast & depth perception of blues & greens.



MIRRORED COPPER

VLT: 23

For flat to bright light. Improves contrast & depth perception of blues & greens, while reflecting glare.



SMOKE GRAY

VLT: 15

For medium to bright light. An all-purpose daytime lens with unbiased influence on color



POLARIZED GRAY

VLT: 15

For extremely bright light & reflective surfaces. Is the most effective at cutting glare, has unbiased influence on color.



MIRRORED SILVER

VLT: 14

For medium to extremely bright light. Similar to Mirrored Gray, but with a heavier mirrored finish.



MIRRORED BLUE

VLT: 13

For medium to extremely bright light. Similar to Mirrored Silver, but with a reflective blue mirrored finish.



MIRRORED GRAY

VLT: 12

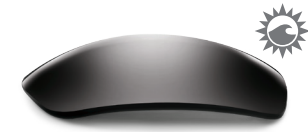
For medium to extremely bright light. An all-purpose lens that reflects glare with unbiased influence on color.



POLARIZED MIRRORED BLUE

VLT: 11

For extremely bright light & reflective surfaces. Polarized reflective blue mirrored finish.



POLARIZED MIRRORED GRAY

VLT: 9

For intense, blinding sun & reflective surfaces. Is the most effective at cutting glare, has unbiased influence on color.

CROWBAR™ **NEW**



Rapid Lens Exchange

Crowbar's frameless bottom provides increased field of view, Lens Gate allows for rapid lens exchange



PRODUCT DESCRIPTION

Meet the lightweight and durable Crowbar™ interchangeable-lens sunglass from ESS. Featuring a frameless bottom lens design and innovative Lens Gate™ that makes lens exchanges quicker and field of view greater than ever. The military-grade polycarbonate lens material delivers crisp optics, plus a broad range of ballistic protection. A light and balanced fit that won't interfere with hats, helmets, hearing pro or comms gear.

Small-to-Medium Fit

LENSES

2.2MM HIGH-IMPACT POLYCARBONATE • INTERCHANGEABLE • 100% UVA/UVB PROTECTION
ESS TOUGHZONE™ ANTI-SCRATCH LENS COATING • DISTORTION-FREE ESSOPTICS™

BALLISTIC PROTECTION STANDARDS


U.S. MIL SPEC MIL-PRF-32432, ANSI Z87.1-2010, OSHA & CE EN166
EXCEPT POLARIZED LENSES WHICH MEET ANSI Z87.1-2010 (IMPACT) & OSHA

FRAME & LENS OPTIONS

Frame Color

	Black/Subdued
	Black/Silver
	Terrain Tan

Lens Tint

	Clear	88%
	Hi-Def Yellow	85%
	Hi-Def Bronze	62%
	Mirrored Copper	23%
	Smoke Gray	15%
	Mirrored Gray	12%
	Polarized Mirrored Gray	9%



Rapid Lens Exchange

The Rollbar's Lens Gate allows lenses to be swapped out swiftly and securely.



PRODUCT DESCRIPTION

The Rollbar™ sunglass from ESS allows for rapid lens exchanges with the auto-locking Rollbar Lens Gate™. The sleek-yet-rugged design is built to excel in the most grueling environments. ESS military-grade polycarbonate lens material delivers crisp optics, plus a broad range of ballistic protection. A balanced fit and low-drag temple arms that won't interfere with hats, helmets, hearing pro or comms gear.

Medium-to-Large Fit

LENSES

2.2MM HIGH-IMPACT POLYCARBONATE • INTERCHANGEABLE • 100% UVA/UVB PROTECTION
ESS TOUGHZONE™ ANTI-SCRATCH LENS COATING • DISTORTION-FREE ESSOPTICS™

BALLISTIC PROTECTION STANDARDS








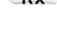
U.S. MIL SPEC MIL-PRF-32432, ANSI Z87.1-2010, OSHA & CE EN166
EXCEPT POLARIZED LENSES WHICH MEET ANSI Z87.1-2010 (IMPACT) & OSHA

FRAME & LENS OPTIONS

Frame Color

	Black/Subdued
	Black/Silver
	Terrain Tan

Lens Tint

	Clear	88%
	Hi-Def Yellow	85%
	Hi-Def Bronze	62%
	Mirrored Copper	23%
	Smoke Gray	15%
	Mirrored Gray	12%
	Polarized Mirrored Gray	9%
	Custom Rx	

CDI™



Lateral Exchange System™ allows for rapid interchange of lenses. (Feature is specific to CDI & CDI MAX)



PRODUCT DESCRIPTION

The lightweight CDI™ sunglass features interchangeable lenses that can be easily swapped for quick adaptation to your environment. No-slip nosepads and temple arms help keep the CDI secure, even when wet.

Small-Medium Fit

FRAME & LENS OPTIONS

Frame Color



Black



Terrain Tan

Lens Tint



Clear

VLT

88%



Hi-Def Yellow

85%



Hi-Def Bronze

62%



Mirrored Copper

23%



Smoke Gray

15%



Mirrored Silver

14%



Mirrored Gray

12%



Polarized Mirrored Gray

9%



Rx Custom Rx

LENSES

2.2MM HIGH-IMPACT POLYCARBONATE • INTERCHANGEABLE • 100% UVA/UVB PROTECTION
ESS TOUGHZONE™ ANTI-SCRATCH LENS COATING • DISTORTION-FREE ESSOPTICS™

BALLISTIC PROTECTION STANDARDS

U.S. MIL SPEC MIL-PRF-31013 (CLAUSE 3.5.1.1), ANSI Z87.1 – 2010, OSHA & CE EN166
EXCEPT POLARIZED PRODUCTS WHICH ONLY MEET ANSI Z87.1-2010 (IMPACT) & OSHA.

CDI MAX™



Lateral Exchange System™ allows for rapid interchange of lenses. (Feature is specific to CDI & CDI MAX)



PRODUCT DESCRIPTION

The CDI MAX™ is a larger version of the popular CDI™, offering a wider field of view and broader coverage. As with the original CDI, the CDI MAX can adapt to any light environment by swapping lenses with the Lateral Exchange System™. CDI MAX's 2.4mm Polycarbonate lenses afford you maximum protection.

Medium to Large Fit

FRAME & LENS OPTIONS

Frame Color



Black



Terrain Tan

Lens Tint



Clear

VLT

88%



Hi-Def Yellow

85%



Hi-Def Bronze

62%



Hi-Def Copper

32%



Smoke Gray

15%



Mirrored Silver

14%

LENSES

2.4MM HIGH-IMPACT POLYCARBONATE • INTERCHANGEABLE • 100% UVA/UVB PROTECTION
ESS TOUGHZONE™ ANTI-SCRATCH LENS COATING • DISTORTION-FREE ESSOPTICS™

BALLISTIC PROTECTION STANDARDS

U.S. MIL SPEC MIL-PRF-31013 (CLAUSE 3.5.1.1), ANSI Z87.1 – 2010, OSHA & CE EN166



5B™



5B™ Reaper Woods
Limited Edition Reaper Woods Series
available with multiple lens options



PRODUCT DESCRIPTION

The ESS 5B™ is far more than just another sunglass. With ballistic lenses, distortion-free optics, and all-day comfort, the 5B™ is the true embodiment of functional, fashionable eye pro. The frame features low-profile temple arms for comfort with over-the-ear hearing protection, hats or helmets.

Medium Fit

LENSES

2.2MM HIGH-IMPACT POLYCARBONATE • 100% UVA/UVB PROTECTION
ESS TOUGHZONE™ ANTI-SCRATCH LENS COATING • DISTORTION-FREE ESSOPTICS™

BALLISTIC PROTECTION STANDARDS

U.S. MIL SPEC MIL-PRF-32432, ANSI Z87.1-2010, OSHA & CE EN166
EXCEPT POLARIZED LENSES WHICH MEET ANSI Z87.1-2010 (IMPACT) & OSHA

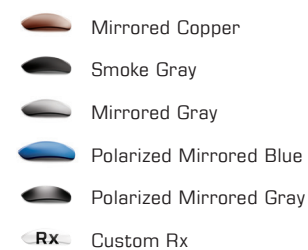
FRAME & LENS OPTIONS

Frame Color



Black
Gray
Terrain Tan
Reaper Woods

Lens Tint



Mirrored Copper
Smoke Gray
Mirrored Gray
Polarized Mirrored Blue
Polarized Mirrored Gray
Rx Custom Rx

VLT

23%
15%
12%
11%
9%

CREDECENCE™



Credence™ Reaper Woods

Limited Edition Reaper Woods Series available with smoke gray lenses.

PRODUCT DESCRIPTION

With Credence™, seeing is believing. This sunglass delivers a hefty dose of performance, protection and style. The broad lens wrap of the Credence provides a wide field of view through distortion-free, military-grade polycarbonate. The frame features low-profile temple arms for comfort with over-the-ear hearing protection, hats or helmets.

Medium-to-Large Fit

LENSES

2.2MM HIGH-IMPACT POLYCARBONATE • 100% UVA/UVB PROTECTION
ESS TOUGHZONE™ ANTI-SCRATCH LENS COATING • DISTORTION-FREE ESSOPTICS™

BALLISTIC PROTECTION STANDARDS

U.S. MIL SPEC MIL-PRF-32432, ANSI Z87.1-2010, OSHA & CE EN166

FRAME & LENS OPTIONS

Frame Color

-  Black/Subdued
-  Black/Silver
-  Black/Copper
-  Gray/Silver
-  Gray/Copper
-  Terrain Tan
-  Reaper Woods

Lens Tint

-  Mirrored Copper 23%
-  Smoke Gray 15%
-  Mirrored Blue 13%
-  Custom Rx

VLT

CROSSBOW®



Crossbow ClearZone™ FlowCoated Lenses

Anti-Fog
Coating on
Inside of Lens



Anti-Scratch
Coating on
Outside of Lens

PRODUCT DESCRIPTION

Militaries worldwide rely on the Crossbow® as their choice of eye protection. Crossbow's form, fit, and function have raised the bar in eye protection. Crossbow is today's ultimate eye pro.

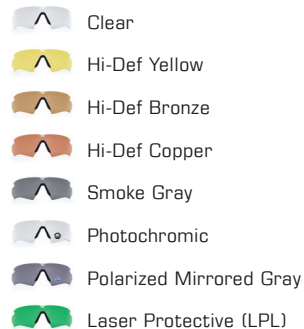
Universal Fit

FRAME & LENS OPTIONS

Frame Color



Lens Tint



VLT

88%
85%
62%
23%
15%
86-24%
9%
n/a

LENSES

2.4MM HIGH-IMPACT POLYCARBONATE • INTERCHANGEABLE • 100% UVA/UVB PROTECTION
ESS CLEARZONE™ ANTI-FOG/ANTI-SCRATCH LENS COATING • DISTORTION-FREE ESSOPTICS™

BALLISTIC PROTECTION STANDARDS

U.S. MIL SPEC MIL-PRF-32432, ANSI Z87.1-2010, OSHA & CE EN166
EXCEPT POLARIZED LENSES WHICH MEET ANSI Z87.1-2010 (IMPACT) & OSHA

Only Clear, Smoke Gray & LPL lenses are authorized for use in the U.S. Military - Crossbow Eshields are compatible with U.S. Army UPLC

SUPPRESSOR™



Crossbow-Suppressor™ 2X+

Deluxe Kit includes specialized Suppressor™ Frame, Universal-fit Crossbow® Frame and three anti-fog Crossbow® lenses.



PRODUCT DESCRIPTION

The Crossbow Suppressor™ is the first spectacle frame designed for use with over-the-ear hearing protection and comms gear. The Suppressor's ultra-thin temple arms help keep noise out and eliminate hot spots by minimizing interference with the padded seal of ear cups.

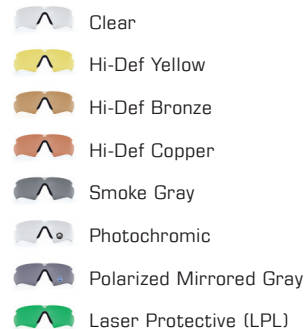
Universal Fit

FRAME & LENS OPTIONS

Frame Color



Lens Tint



VLT

88%
85%
62%
23%
15%
86-24%
9%
n/a

LENSES

2.4MM HIGH-IMPACT POLYCARBONATE • INTERCHANGEABLE • 100% UVA/UVB PROTECTION
ESS CLEARZONE™ ANTI-FOG/ANTI-SCRATCH LENS COATING • DISTORTION-FREE ESSOPTICS™

BALLISTIC PROTECTION STANDARDS

U.S. MIL SPEC MIL-PRF-32432, ANSI Z87.1-2010, OSHA & CE EN166
EXCEPT POLARIZED LENSES WHICH MEET ANSI Z87.1-2010 (IMPACT) & OSHA

Only Clear, Smoke Gray & LPL lenses are authorized for use in the U.S. Military - Crossbow Eyeshields are compatible with U.S. Army UPLC

EYESHIELDS



CROSSHAIR™



Crosshair™ 2X Kit

Comes with two complete eyeshields. This is a great starter kit for individuals or departments that want premium eye protection but are on a budget.



PRODUCT DESCRIPTION

This Crosshair™ is an entry level eyeshield that provides all day comfort and universal fit. The Crosshair benefits from complete compatibility with the ESS CrossSeries eyeshield platform for customization in any environment.

Universal Fit

FRAME & LENS OPTIONS

Frame Color



Lens Tint



VLT

88%
85%
62%
23%
15%

LENSES

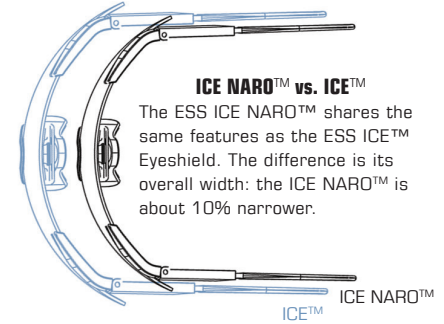
2.4MM HIGH-IMPACT POLYCARBONATE • INTERCHANGEABLE • 100% UVA/UVB PROTECTION
ESS TOUGHZONE™ ANTI-SCRATCH LENS COATING • DISTORTION-FREE ESSOPTICS™

BALLISTIC PROTECTION STANDARDS

U.S. MIL SPEC MIL-PRF-32432, ANSI Z87.1-2010, OSHA & CE EN166

Only Clear, Smoke Gray & LPL lenses are authorized for use in the U.S. Military - Crosshair Eyeshields are compatible with U.S. Army UPLC

ICE™ & ICE NARO™



YESHIELDS

PRODUCT DESCRIPTION

ESS ICE™ & ICE NARO™ eyeshields offer a unique combination of impact resistance, unrestricted view, and interchangeable lenses for "frameless" eye protection in any light. Reinforced PosiLock™ temples provide a secure and adjustable fit through their pliable earwires and variable-length arms.

ICE NARO is approximately 10% narrower than the standard ICE and is engineered for smaller faces.

Note: ICE™ and ICE NARO™ are not part of the Cross-Series.

LENSES

2.4MM HIGH-IMPACT POLYCARBONATE • INTERCHANGEABLE • 100% UVA/UVB PROTECTION
ESS TOUGHZONE™ ANTI-SCRATCH LENS COATING • DISTORTION-FREE ESSOPTICS™

BALLISTIC PROTECTION STANDARDS

U.S. MIL SPEC MIL-PRF-31013 (CLAUSE 3.5.1.1), ANSI Z87.1 – 2010, OSHA & CE EN166

ICE and ICE NARO are compatible with U.S. Army UPLC

FRAME & LENS OPTIONS

Frame Color



Lens Tint

	Clear	88%
	Hi-Def Yellow	85%
	Hi-Def Copper	23%
	Smoke Gray	15%

Influx™

AVS™ GOGGLE

ADJUSTABLE VENTILATION SYSTEM (AVS)™

LENS PIVOTS OPEN TO CREATE AIRFLOW
& CLICKS SHUT TO SEAL GOGGLE

ESS Influx™ Engineering:

- > The Anti-Fog Goggle: Patented Rotoclip™ allows lens to open & close for ventilation & fully-sealed filtration
- > State-of-the-art ballistic goggle meets or exceeds MIL-PRF-32432 and ANSI Z87.1+
- > Rapid lens exchange

THE INFLUX™ GOGGLE
ANY ENVIRONMENT
ANY SITUATION



INFLUX™ **NEW**



Influx™ Goggle Kit

Now on the U.S. APEL, the Influx goggle's innovative AVS™ system eliminates lens fogging.



PRODUCT DESCRIPTION

By virtually eliminating lens fogging, the ESS Influx™ military goggle allows troops to maintain full situational awareness in dynamic tactical environments. As part of the goggle's patented Adjustable Ventilation System™ (AVS™), the Influx RotoClip™ silently pivots the position of the lens inside the goggle frame: choose either a dust-free, fully-sealed mode, or a fog-free, open-ventilation mode. With Influx™, troops can always see clearly and act fast when seconds count.

LENSES

3MM HIGH-IMPACT POLYCARBONATE • INTERCHANGEABLE • 100% UVA/UVB PROTECTION
 ESS CLEARZONE™ ANTI-FOG/ANTI-SCRATCH LENS COATING • DISTORTION-FREE ESSOPTICS™

BALLISTIC PROTECTION STANDARDS

U.S. MIL SPEC MIL-PRF-32432, ANSI Z87.1 – 2010, OSHA & CE EN166

Influx Goggles are compatible with U.S. Army UPLC

FRAME & LENS OPTIONS

Frame Color



Terrain Tan



Black



Foliage Green

Lens Tint



Clear



Smoke Gray

VLT

88%

15%

MILITARY GOGGLES



PROFILE NVG™



Profile NVG™ Goggle Kit

On the U.S. APEL, the NVG goggle features a low-profile and is night-vision compatible



PRODUCT DESCRIPTION

Battle tested in the most demanding theaters, the patented ESS Profile NVG™ is a low-profile, night-vision-compatible goggle authorized and issued by the U.S. Army, USMC, USAF, and numerous NATO governments. The goggle's full-perimeter ventilation and filtration system minimizes lens fogging and filters airborne particles, dust and splashes. Advanced ClearZone™ FlowCoat lenses provide an optimal combination of anti-scratch coatings on the outside of the lens and anti-fog coatings on the inside.

LENSES

2.8MM HIGH-IMPACT POLYCARBONATE • INTERCHANGEABLE • 100% UVA/UVB PROTECTION
ESS CLEARZONE™ ANTI-FOG/ANTI-SCRATCH LENS COATING • DISTORTION-FREE ESSOPTICS™

BALLISTIC PROTECTION STANDARDS

U.S. MIL SPEC MIL-PRF-32432, ANSI Z87.1 – 2010, OSHA & CE EN166

Only Clear, Smoke Gray & LPL lenses are authorized for use in the U.S. Military - Profile Goggles are compatible with U.S. Army UPLC

FRAME & LENS OPTIONS

Frame Color



Terrain Tan



Black



Foliage Green

Lens Tint



Clear



Hi-Def Yellow



Hi-Def Bronze



Smoke Gray



Laser Protective (LPL)

VLT

88%

85%

62%

15%

n/a

PROFILE PIVOT™



Profile Pivot™ for Ops Core® ARC™



Profile Pivot™ TW Goggle



Profile Pivot™ for ACH/MICH

PRODUCT DESCRIPTION

The ESS Profile Pivot™ systems are engineered with two pivoting adjustable side-straps that can be rapidly-affixed in the field while wearing helmet and gloves. Once mounted to its helmet-posts, the secured Profile Pivot goggle can be repositioned or removed as needed. Advantages include; easy donning and doffing, multiple secure stowage options, and rapid strap adjustment.

LENSES

2.8MM HIGH-IMPACT POLYCARBONATE • INTERCHANGEABLE • 100% UVA/UVB PROTECTION
ESS CLEARZONE™ ANTI-FOG/ANTI-SCRATCH LENS COATING • DISTORTION-FREE ESSOPTICS™

BALLISTIC PROTECTION STANDARDS

U.S. MIL SPEC MIL-PRF-32432, ANSI Z87.1 – 2010, OSHA & CE EN166

Only Clear, Smoke Gray & LPL lenses are authorized for use in the U.S. Military - Profile Goggles are compatible with U.S. Army UPLC

FRAME & LENS OPTIONS

Frame Color



Terrain Tan

Gray

Lens Tint



Clear

Hi-Def Yellow

Hi-Def Bronze

Smoke Gray

Laser Protective (LPL)

VLT

88%

85%

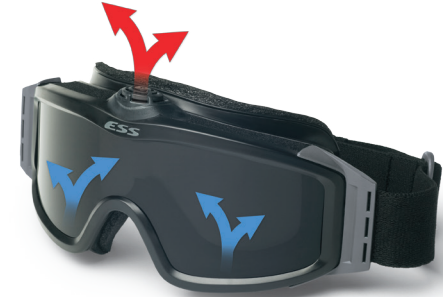
62%

15%

n/a

MILITARY GOGGLES

PROFILE TURBOFAN™



Improved TurboFan Blade Geometry is up to 5x more efficient than the original design. It draws fresh air in through the goggle bottom and forces humid air out the top at up to 13,000 rpm.

PRODUCT DESCRIPTION

The ESS TurboFan™ series features a built-in fan that blows humidity out of the goggle at 13,000 rpm to eliminate lens fogging. Enhanced battery life runs for up to 150 hours on a single AA battery at low speed. "Auto-off" electronics maximize battery life and prevent accidental battery drain.

FRAME & LENS OPTIONS

Frame Color



Black

Lens Tint



Clear

VLT

88%



Hi-Def Yellow

85%



Hi-Def Bronze

62%



Smoke Gray

15%



Laser Protective (LPL)

n/a

LENSES

2.8MM HIGH-IMPACT POLYCARBONATE • INTERCHANGEABLE • 100% UVA/UVB PROTECTION
ESS CLEARZONE™ ANTI-FOG/ANTI-SCRATCH LENS COATING • DISTORTION-FREE ESSOPTICS™

BALLISTIC PROTECTION STANDARDS

U.S. MIL SPEC MIL-PRF-32432, ANSI Z87.1 – 2010, OSHA & CE EN166

Only Clear, Smoke Gray & LPL lenses are authorized for use in the U.S. Military - Profile TurboFan Goggles are compatible with U.S. Army UPLC

LAND OPS™ & TACTICAL XT™



PRODUCT DESCRIPTION

The ESS Land Ops™ is one of the only goggles authorized by the U.S. Army for use over prescription eyewear. Featuring closed-cell face padding for superior durability, easy of cleaning and long-lasting comfort. Full-perimeter Hi-Flow™ ventilation & filtration system permits airflow while filtering out airborne particles, air blasts, and splashes. The ESS Tactical XT™ is a non-APEL, economical high-performance goggle with all the core features of the ESS Striker™ Series.

LENSES

2.6MM HIGH-IMPACT POLYCARBONATE • INTERCHANGEABLE • 100% UVA/UVB PROTECTION
ESS TOUGHZONE™ ANTI-SCRATCH LENS COATING • DISTORTION-FREE ESSOPTICS™

BALLISTIC PROTECTION STANDARDS

U.S. MIL SPEC MIL-PRF-32432, ANSI Z87.1 – 2010, OSHA & CE EN166

Only Clear, Smoke Gray lenses are authorized for use in the U.S. Military

FRAME & LENS OPTIONS

Frame Color



Terrain Tan



Foliage Green



Black
(Tactical XT)

Lens Tint



Clear



Hi-Def Yellow



Hi-Def Bronze



Smoke Gray

VLT

88%

85%

62%

15%

MILITARY GOGGLES



FLIGHT PRO™



Speed-Clip™ Strap System

Patented system provides quick strap adjustment & optimized fit with cranial helmets



PRODUCT DESCRIPTION

The ESS Flight Pro™ is a low-profile goggle approved for use on U.S. Navy flight decks. Based on the ESS Profile NVG™ goggle, it has all the advantages of a low-profile, night-vision-compatible frame. ClearZone™ FlowCoat lenses provide an optimal combination of anti-fog/anti-scratch coatings. Ideal for cranial helmets, the Flight Pro™ features ESS' patented Speed-Clip™ system, which provides quick adjustment of the high-memory elastic strap, even when wearing gloves.

LENSES

2.8MM HIGH-IMPACT POLYCARBONATE • INTERCHANGEABLE • 100% UVA/UVB PROTECTION
ESS CLEARZONE™ ANTI-FOG/ANTI-SCRATCH LENS COATING • DISTORTION-FREE ESSOPTICS™

BALLISTIC PROTECTION STANDARDS

U.S. MIL SPEC MIL-PRF-32432, ANSI Z87.1 – 2010, OSHA & CE EN166

Only Clear, Smoke Gray & LPL lenses are authorized for use in the U.S. Military - Flight Pro Goggles are compatible with U.S. Army UPLC

FRAME & LENS OPTIONS

Frame Color



Gray

Lens Tint



Clear

VLT

88%



Hi-Def Yellow

85%



Hi-Def Bronze

62%



Smoke Gray

15%



Laser Protective (LPL)

n/a

FLIGHT DECK™



Speed-Clip™ Strap System

Patented system provides quick strap adjustment & optimized fit with cranial helmets

PRODUCT DESCRIPTION

The ESS Flight Deck is the only commercial goggle authorized by the U.S. Navy for use on flight decks, and is standard issue for the Australian Navy. The 26mm-wide, high-memory elastic strap features ESS' patented Speed-Clip™ system, which provides quick strap adjustment and is ideal for cranial helmets. The full-perimeter, Low-Flow™ ventilation and filtration system ventilates humid air while filtering airborne particles, air blasts and splashes. The roomy Striker™ frame fits over most eyeglasses.

LENSES

2.6MM HIGH-IMPACT POLYCARBONATE • INTERCHANGEABLE • 100% UVA/UVB PROTECTION
ESS TOUGHZONE™ ANTI-SCRATCH LENS COATING • DISTORTION-FREE ESSOPTICS™

BALLISTIC PROTECTION STANDARDS

U.S. MIL SPEC MIL-PRF-32432, ANSI Z87.1 – 2010, OSHA & CE EN166

Only Clear, Smoke Gray lenses are authorized for use in the U.S. Military

FRAME & LENS OPTIONS

Frame Color



Gray

Lens Tint



Clear

VLT

88%



Hi-Def Yellow

85%



Hi-Def Bronze

62%



Smoke Gray

15%

FIREPRO-1971™



PRODUCT DESCRIPTION

With low-profile frames and anti-fog lenses, ESS FirePro-1971™ structural firefighting goggles are the most advanced on the market. This goggle series is certified as compliant with NFPA 1971-2013 Edition, including the 5-minute, 500°F oven test and is considered Primary Eye Protection by NFPA 1500. All components of ESS FirePro-1971™ goggles are heat and flame resistant. The FirePro- 1971™ also features the same mounting systems as the Innerzone™ making the system cross-compatible.

LENSES

2.8MM HIGH-IMPACT POLYCARBONATE • INTERCHANGEABLE • 100% UVA/UVB PROTECTION
ESS TOUGHZONE™ ANTI-SCRATCH LENS COATING • DISTORTION-FREE ESSOPTICS™

BALLISTIC PROTECTION STANDARDS

NFPA 1971, 2013 EDITION • ANSI Z87.1-2010 • U.S. FEDERAL OSHA



FirePro-1971 EX-1™ w/ Thumb-Screw mounting brackets



FirePro-1971 EX-2™ w/ Snap-On/Snap-Off mounting brackets

FRAME & LENS OPTIONS

Frame Color



Gray

Lens Tint



Clear

VLT

88%

INNERZONE™



Innerzone-1™ w/ Thumb-Screw mounting brackets



Innerzone-2™ w/ Snap-On/Snap-Off mounting brackets

PRODUCT DESCRIPTION

The Innerzone™ Structural goggles can be worn alone, on a helmet, or in conjunction with faceshields or flip-downs. The patented Speed-Clip™ strap system facilitates quick strap adjustment, even with gloves on. The Innerzone™ is compliant with NFPA 1971-2013, including the 500°F for 5-minute oven test. The Innerzone also features the same mounting systems as the FirePro-1971™ making the system upgradeable and cross-compatible.

LENSES

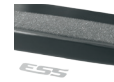
2.6MM HIGH-IMPACT POLYCARBONATE • INTERCHANGEABLE • 100% UVA/UVB PROTECTION
ESS TOUGHZONE™ ANTI-SCRATCH LENS COATING • DISTORTION-FREE ESSOPTICS™

BALLISTIC PROTECTION STANDARDS

NFPA 1971, 2013 EDITION • ANSI Z87.1-2010 • U.S. FEDERAL OSHA

FRAME & LENS OPTIONS

Frame Color



Gray

Lens Tint



Clear

VLT

88%

FIRE GOGGLES



FIREPRO-1977™



PRODUCT DESCRIPTION

The ESS FirePro-1977™ goggle series features a low-profile design that prevents helmet interference and increases peripheral vision. The patented Speed-Clip™ system facilitates quick strap adjustment, even with gloves on. All goggle components are heat and flame resistant, including the durable OpFoam™ face padding. All ESS FirePro-1977™ Goggles are certified as compliant with NFPA 1977-2011 Edition, including the 350°F for 5-minute oven test. Tear-Off Lens Covers are available as accessories.

LENSES

2.8MM HIGH-IMPACT POLYCARBONATE • INTERCHANGEABLE • 100% UVA/UVB PROTECTION
ESS TOUGHZONE™ ANTI-SCRATCH LENS COATING • DISTORTION-FREE ESSOPTICS™

BALLISTIC PROTECTION STANDARDS

NFPA 1977-2011 EDITION • ANSI Z87.1-2010 • U.S. FEDERAL OSHA



FirePro-1977™ EX w/ Snap-On/Snap-Off mounting brackets



FirePro-1977™ Asian Fit Flatter Lens Curves and extra padded face foam.

FRAME & LENS OPTIONS

Frame Color



Gray

Lens Tint



Clear

VLT

88%

STRIKETEAM™ SERIES



Striketeam XTO™



X-Tricator™



Striketeam SJ™



Striketeam WF™

PRODUCT DESCRIPTION

The ESS Striketeam™ Series is a high-performance goggle line intended for Wildland Firefighting, Rescue, and EMS applications. All Striketeam™ models offer the highest level of comfort, optical clarity and impact protection. All goggle components are heat and flame resistant, including the face padding and vent foam. The patented Speed-Clip™ system adapts to all wildland and rescue helmets and facilitates quick strap adjustment, even with gloves on.

LENSES

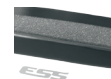
2.6MM HIGH-IMPACT POLYCARBONATE • INTERCHANGEABLE • 100% UVA/UVB PROTECTION
ESS TOUGHZONE™ ANTI-SCRATCH LENS COATING • DISTORTION-FREE ESSOPTICS™

BALLISTIC PROTECTION STANDARDS

NFPA 1500 • ANSI Z87.1-2010 • U.S. FEDERAL OSHA

FRAME & LENS OPTIONS

Frame Color



Gray

Lens Tint



Clear

VLT

88%

RX LENS CARRIERS

PROTECTIVE PRESCRIPTION EYEWEAR



Many ESS products are compatible with Rx inserts (U-Rx™ & Vice™), which fit behind your eye pro's primary lenses. To identify Rx insert-compatible products, look for the *Rx Insert Available* symbol (shown above or reference the chart on the next page). Custom Rx Inserts can be filled by ESS through our online ordering process, or by your own optician.*



U-RX™ INSERT

The **U-Rx™** Prescription Lens Insert was developed to be the most comprehensive and adaptable Rx solution ever made. This universal Rx carrier is the first to interchange across brands in a wide variety of ESS and Oakley® ballistic eyeshields and goggles. The nylon-frame U-Rx is approved by the U.S. Army and Marine Corps for the new APEL and MCEPS standards. Kit includes two sets of nosepieces and goggle adapters for both ESS and Oakley® products. The U-Rx is compatible with the Oakley® Ballistic M-Frame 2.0 / 3.0 and Oakley® SI Ballistic Goggle.



The U-Rx™ Insert is designed to be used seamlessly with CrossSeries™ Eyeshields and Profile™ NVG Goggle platforms.



VICE™ RX INSERT

The wire & monofilament-framed **Vice™** Rx Lens Insert snaps into a Crossbow®, Crosshair™, Suppressor™, ICE™, or ICE NARO™ eyeshield for a low-profile, lightweight prescription integration. This allows one prescription carrier to work in multiple products. The Vice™ can be filled by ESS' skilled optometrists and includes a Vice™ Rx eyeshield nosepiece.

If not using ESS Rx Filling Service, ESS strongly recommends the use of Polycarbonate lenses in prescription inserts. Rx filling should always be done in an ANSI-compliant lab. Range of prescription inserts may vary based on the filling service you use.



RX SUNGLASSES

CUSTOMIZABLE PRESCRIPTION SUNGLASSES



ROLLBAR™, CREDENCE™ & 5B™ RX

Designed to provide superior impact protection without interfering with your other gear, Rollbar™, with interchangeable Rx lenses, or Credence™ & 5B™ sunglasses with fixed Rx lenses are available in a variety of frame colors and lens options.



CDI™ RX INSERTS

The interchangeable nylon-framed CDI™ Rx Inserts** slide into the CDI frame just like any other CDI lens.









***Use of Rx inserts renders the CDI sunglass non-compliant with MIL-PRF-32432 & ANSI Z87.1.*

ESS Prescription Eyewear Compatibility Matrix









Rx Compatibility		Influx Goggles	Profile Series Profile NVG Profile TurboFan Profile Pivot Flight Pro	FirePro Series FirePro 1971 FirePro 1977	CrossSeries Crossbow Suppressor Crosshair	Crossbow Gasket	ICE Series ICE ICE NARO	CDI Sunglasses CDI	Sunglasses 5B Credence Rollbar
Model	Rx Range*								
U-Rx Rx Insert	+11/-11		●	●	●	●	●		
Vice Rx Insert	+6/-6				●		●		
CDI Rx Inserts	+5.5/-6							●	
Rx-Ready Sunglasses	{Varies}								●
U.S. Army UPLC		●	●	●	●	●	●		

*Range of prescription may vary based on the filling service you use.








ESS U.S. NSN LIST

Product Description	Model #	U.S. NSN #	
Crossbow Spectacles (Universal Fit)			
Crossbow: Eyeshield w/ Clear & Gray Lenses, UPLC Nosepiece & MOLLE Case	740-0607	4240-01-630-8327	
Crossbow Replacement Lens: Single-Pack Clear	740-0486	4240-01-587-7512	
Crossbow Replacement Lens: Single-Pack Smoke Gray	740-0487	4240-01-587-7516	
Crossbow Replacement Lenses: 10-Pack Clear	740-0421	4240-01-583-5748	
Crossbow Replacement Lenses: 10-Pack Smoke Gray	740-0420	4240-01-583-5786	
Crossbow Replacement Frame: Black	740-0446	4240-01-583-5973	
Crossbow Replacement Nose Piece	740-0473	NSN- TBD	
Crossbow MOLLE Replacement Case	740-0445	4240-01-583-5969	

Crosshair Spectacles (Universal Fit)

Crosshair: Eyeshield w/ Clear & Gray Lenses, UPLC Nosepiece & MOLLE Case	EE9014-11	4240-01-630-6352	
Crosshair Replacement Lens: Single-Pack Clear	740-0479	4240-01-632-5140	
Crosshair Replacement Lens: Single-Pack Smoke Gray	740-0480	4240-01-632-5144	
Crosshair Replacement Lenses: 10-Pack Clear	740-0482	4240-01-632-5857	
Crosshair Replacement Lenses: 10-Pack Smoke Gray	740-0483	4240-01-632-5864	
Crosshair Replacement Frame: Black	600-791-002	4240-01-632-5130	
Crosshair Replacement Nose Piece	101-307-001	4240-01-633-4210	
Crosshair MOLLE Replacement Case	101-295-001	4240-01-633-3562	

Rollbar Spectacles (Universal Fit)

Rollbar Unit Issue: Spectacle w/ Clear & Gray Lenses & MOLLE Case	EE9018-01	4240-01-630-8249	
Rollbar Replacement Lenses: Single-Pack Clear	740-0599	4240-01-632-5147	
Rollbar Replacement Lenses: Single-Pack Smoke Gray	740-0600	4240-01-632-5164	
Rollbar Replacement Lenses: 10-Pack Clear	101-286-002	4240-01-632-5867	
Rollbar Replacement Lenses: 10-Pack Smoke Gray	101-286-001	4240-01-632-5874	
Rollbar Replacement Frame: Black	600-915-002	4240-01-632-8150	
Rollbar Replacement Case	200-236-001	4240-01-633-3547	

Products shown with this symbol  are included on the U.S. Army APEL

Product Description	Model #	U.S. NSN #	
ICE Spectacles (Regular Size)			
ICE-2X: Dual-Eyeshield Premium Kit w/ Clear & Smoke Gray Lenses	740-0004	4240-01-554-5699	
ICE Replacement Lenses: 50-Pack Clear	740-0072	4240-01-525-4819	
ICE Replacement Lenses: 50-Pack Smoke Gray	740-0087	4240-01-525-5098	
ICE Replacement Frame & Nosepiece Kit: Black	740-0082	4240-01-525-5095	
ICE NARO Spectacles (Regular Size)			
ICE-2X NARO: Dual-Eyeshield Premium Kit w/ Clear & Smoke Gray Lenses	740-0002	4240-01-554-5696	
ICE NARO Replacement Lenses: 50-Pack Clear	740-0075	4240-01-549-0863	
ICE NARO Replacement Lenses: 50-Pack Smoke Gray	740-0076	4240-01-549-0876	
ICE NARO Replacement Frame & Nosepiece Kit: Black	740-0083	4240-01-549-0934	









Rx Inserts & Other Accessories

UPLC Adapter, Influx goggle	100-947-001	4240-01-633-4301	
UPLC Adapter, Profile NVG Goggle	100-794-001	4240-01-630-2562	
UPLC Nosepiece, Crossbow & Crosshair	740-0596	4240-01-630-2574	
U-Rx Universal Insert (For Profile, Crossbow, ICE & ICE NARO): Nylon Frame	740-0411	6540-01-584-0170	
U-Rx Universal Insert (For Profile, Crossbow, ICE & ICE NARO): 25-Pack	740-0444	6540-01-584-0176	
P-2B Rx Insert (For Profile, Crossbow, ICE & ICE NARO): Nylon Frame	740-0310	6540-01-525-4784	
Goggle (GNRC) TTAN Replacement Bag	101-312-001	4240-01-633-0955	
Microfiber Sunglass Bag	740-0560	4240-01-633-3498	
Replacement Semi-Rigid Case (For ICE & ICE NARO): Black	740-0081	4240-01-518-9838	
Replacement Elastic Retention Strap, Single	740-0565	4240-01-623-2660	
Replacement Elastic Retention Strap, 25-pack	740-0254	4240-01-525-4777	
Anti-fog solution, Single	101-314-001	4240-01-633-0950	
ClearZone Anti-Fog Wipes: 25-Pack	740-0209	4240-01-525-5107	

ESS U.S. NSN LIST

Product Description

Influx Series Goggles (Universal Fit)

Product Description	Model #	U.S. NSN #	
Influx Goggle w/ UPLC adapter, SpeedSleeve & Case: Tan 499	EE7018-04	4240-01-630-6343	
Influx Series Replacement Lens: Single-Pack Clear	101-289-002	4240-01-632-5230	
Influx Series Replacement Lens: Single-Pack Smoke Gray	101-289-001	4240-01-632-5237	
Influx Series Replacement Lenses: 10-Pack Clear	101-290-002	4240-01-632-6923	
Influx Series Replacement Lenses: 10-Pack Smoke Gray	101-290-001	4240-01-632-6927	
Influx Goggle Replacement Frame: Tan 499	101-301-001	4240-01-632-8181	
Influx Goggle Replacement Strap: Tan 499	101-311-001	4240-01-633-4340	
Influx Goggle Replacement SpeedSleeve : Tan 499	101-310-001	4240-01-633-3513	

Profile Series Goggles (Universal Fit)

Profile NVG Goggle w/ UPLC adapter, SpeedSleeve & Case: Tan 499	740-0609	4240-01-630-7259	
Profile NVG Goggle w/ MultiCam SpeedSleeve : OCP	740-0496	4240-01-604-2788	
Profile NVG Goggle w/ SpeedSleeve & Case: Foliage Green	740-0129	4240-01-540-5585	
Profile NVG Goggle w/ SpeedSleeve & Case: Black	740-0124	4240-01-504-6222	
Flight Pro Goggle: Gray	740-0410	1680-01-602-5906	
Profile NVG Replacement Lens: Single-Pack Clear	740-0113	4240-01-587-8420	
Profile NVG Replacement Lens: Single-Pack Smoke Gray	740-0119	4240-01-587-7640	
Profile NVG Replacement Lens: 10-Pack Clear	101-288-002	4240-01-632-6907	
Profile NVG Replacement Lens: 10-Pack Smoke Gray	101-288-001	4240-01-632-6914	
Profile NVG Replacement Frame w/ MultiCam SpeedSleeve: OCP	740-0534	4240-01-604-2791	
Profile NVG Replacement Frame: Tan 499	600-520-002	4240-01-641-7798	
Profile NVG Replacement Frame: Foliage Green	740-0464	4240-01-587-7565	
Profile NVG Replacement Frame: Black	740-0465	4240-01-587-7520	
Profile NVG Tan 499 Replacement Strap	101-308-001	4240-01-633-4339	
Profile NVG Tan 499 Replacement AR Sleeve	101-309-001	4240-01-633-3504	

Products shown with this symbol  are included on the U.S. Army APEL

Product Description

Striker Series Goggles (Universal Fit)

Product Description	Model #	U.S. NSN #	
Land Ops Goggle w/ SpeedSleeve & Case: Tan 499	740-0206	4240-01-540-5580	
Land Ops Goggle w/ SpeedSleeve & Case: Foliage Green	740-0202	4240-01-540-5576	
Vehicle Ops Goggle w/ SpeedSleeve & Case: Black	740-0248	4240-01-525-5101	
Flight Deck Goggle: Gray	740-0197	4240-01-492-5720	
Land Ops Replacement Lens: Single-Pack Clear	740-0192	4240-01-632-5238	
Land Ops Replacement Lens: Single-Pack Smoke Gray	740-0227	4240-01-632-5240	
Land Ops Replacement Lens: 10-Pack Clear	101-287-002	4240-01-632-6934	
Land Ops Replacement Lens: 10-Pack Smoke Gray	101-287-001	4240-01-632-6936	
Striker Series Replacement Lens: 50-Pack Smoke Gray	740-0226	4240-01-492-5725	
Striker Series Replacement Lens: 50-Pack Clear	740-0191	4240-01-492-5722	
Land Ops Replacement Frame w/ Speed Sleeve Tan 499	740-0467	4240-01-633-3347	

ESS - U.S. MILITARY REGIONAL DIRECTORS & ADVISORS

COL (ret) Jack Carpenter	ESS National Guard & Reserve Component Director	jack@esseyepro.com
CSM (ret) Mike Turner	ESS Western Regional Military Director	mt@esseyepro.com
CSM (ret) Carl Christian	ESS Eastern Regional Military Director	carl@esseyepro.com
SEAC (ret) Joe Gaaney	ESS Military Program Advisor	firstseac@aol.com

Other Purchasing Info:



ESS NATO STOCK NUMBER (NSN) LIST

Product Description

Model



Crossbow Spectacles

Crossbow 2LS: Clear, Smoke Gray Lenses & Case	740-0390	4240-01-583-9497
Crossbow 3LS: Clear, Smoke Gray, Hi-Def Yellow Lenses & Case	740-0387	8465-01-583-9799
Crossbow Replacement Lenses: 10-Pack Clear	740-0421	4240-01-583-5748
Crossbow Replacement Lenses: 10-Pack Smoke Gray	740-0420	4240-01-583-5786
Crossbow Replacement Lens: Single-Pack Hi-Def Yellow	740-0423	4240-01-610-5884
Crossbow Replacement Lens: Single-Pack Hi-Def Bronze	740-0509	4240-01-610-5886
Crossbow Rigid MOLLE Replacement Case: Black	740-0445	4240-01-583-5969
Crossbow Replacement Frame: Black	740-0446	4240-01-583-5973



Suppressor Spectacles

Crossbow Suppressor 2X: 1 Suppressor, 1 Crossbow & Case	740-0451	4240-01-594-0564
---	----------	------------------



Crosshair Spectacles

Crosshair 3LS: Black w/ Clear, Smoke Gray, Hi-Def Yellow Lenses & Case	EE9014-05	6930-01-594-0570
Crosshair 2LS: Black w/ Clear, Smoke Gray Lenses & Case	EE9014-04	6930-01-594-0575



ICE Spectacles

ICE-2LS: Clear, Smoke Gray Lenses & Case	740-0015	4240-01-573-1934
ICE-2X: 2 Frames w/ Clear, Smoke Gray Lenses & Case	740-0004	4240-01-554-5699
ICE-3LS: Clear, Smoke Gray, Hi-Def Yellow Lenses & Case	740-0019	4240-01-545-7922
ICE Replacement Lenses: 50-Pack Smoke Gray	740-0087	4240-01-525-5098
ICE Replacement Lenses: 50-Pack Clear	740-0072	4240-01-525-4819
ICE Replacement Frame & Nosepiece Kit: Black	740-0082	4240-01-525-5095



ICE NARO Spectacles

ICE-2 NARO: Clear, Smoke Gray Lenses & Case	740-0008	4240-01-537-6143
ICE-3LS NARO: Clear, Smoke Gray, Hi-Def Yellow Lenses & Case	740-0017	4240-01-545-7923
ICE NARO Replacement Frame & Nosepiece Kit: Black	740-0083	4240-01-549-0934
Replacement Semi-Rigid Case (For ICE Series): Black	740-0081	4240-01-518-9838



Products shown with this symbol



are available on NSPA NLSE:

Product Description

Model



Sunglasses

CDI Sunglasses: Clear, Smoke Gray Lenses & Case: Black	740-0296	4240-01-545-7925
CDI MAX Sunglasses: Clear, Smoke Gray Lenses & Case: Black	740-0297	8465-01-583-9788



Profile Series Goggles

Profile NVG w/ SpeedSleeve & Case: Foliage Green	740-0401	4240-01-573-1926
Profile NVG w/ SpeedSleeve & Case: Black	740-0404	4240-01-573-1936
Profile NVG w/ SpeedSleeve & Case: Black w/ 3 Lenses	740-0397	8465-01-576-7741
Asian-Fit Profile NVG w/ SpeedSleeve & Case: Black	740-0123	8465-01-588-5803
Profile TurboFan Goggle w/ SpeedSleeve & Case: Black	740-0131	4240-01-546-0323
Profile Series Replacement Lenses: 50-Pack Clear	740-0114	4240-01-504-5641
Profile Series Replacement Lenses: 50-Pack Smoke Gray	740-0120	4240-01-504-6143



Striker Series Goggles

Land Ops Goggle w/ SpeedSleeve & Case: Foliage Green	740-0402	4240-01-573-1930
Vehicle Ops Goggle w/ SpeedSleeve & Case: Black	740-0403	4240-01-573-1931
Flight Deck Goggle: Gray	740-0197	4240-01-492-5720
Striker Series Replacement Lenses: 50-Pack Smoke Gray	740-0226	4240-01-492-5725
Striker Series Replacement Lenses: 50-Pack Clear	740-0191	4240-01-492-5722



Rx Inserts & Other Accessories

U-Rx Universal Insert (For Profile, Cross-Series & ICE Series): Nylon Frame	740-0411	6540-01-584-0170
U-Rx Universal Inserts (For Profile, Cross-Series & ICE Series): 25-Pack	740-0444	6540-01-584-0176
P-2B Rx Insert (For Profile, Cross-Series & ICE Series): Nylon Frame	740-0310	6540-01-525-4784
Vice Rx Insert (For Advancer, Cross-Series & ICE Series): Wire Frame	740-0308	6540-01-545-7927
Replacement Elastic Straps (For Cross-Series, ICE Series): 25-Pack	740-0254	4240-01-525-4777
ClearZone Anti-Fog Wipes: 25-Pack	740-0209	4240-01-525-5107



ESS PROUDLY
SUPPORTS:



Sustaining Member



"Dear ESS,

As a Rifle Platoon Sergeant in Southern Afghanistan, I harped on wearing all Personal Protective Equipment (PPE) while on patrol. My entire platoon was equipped with one of your latest products: the ESS Crossbow. I had no idea this emphasis on PPE would save my vision, and the vision of several of my Soldiers.

* * *

On 07 July 2012, while conducting dismounted offensive operations my platoon took several casualties as a result of an IED blast. My Weapons Squad Leader received shrapnel wounds to his face, in all areas except those protected by his ESS glasses.

Undoubtedly his vision was saved by your clearly superior product. Additionally, on 07 October 2012 I was walking in the lead of our formation, clearing our route to our objective. While kneeling and interrogating a possible IED location, the IED was triggered, and sent the majority of the blast towards my torso and head.

Despite the relative proximity to the blast I only received minor facial wounds. I owe my eyesight to your product, as the ESS Crossbows I wore took the majority of sand, shrapnel, and debris. Thank you for protecting my platoon and I, and all other warfighters serving our country."

— PSG Kelly Rogne





Learn more about motorcycle body armor and protection we have.